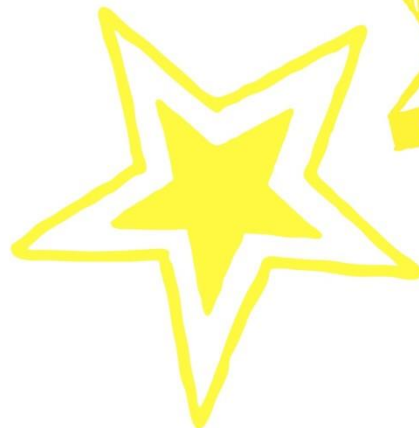
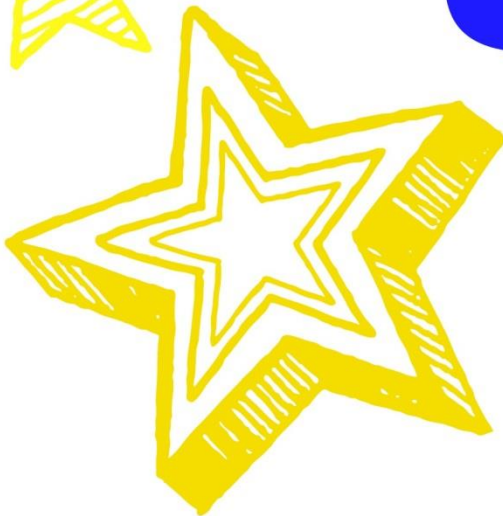


**Space**



**Exploration**

**Unit**



## Planetary Landing Shuttle

|   |  |
|---|--|
| Can you explain what materials you used? (use at least 5 different items) |  |
| Required Items for the shuttle: camera                                    |  |
| Dashboard   |  |
| Access panel  |  |
| Camera to record the amazing sights                                       |  |
| Docking bay to attach to the rest of the ship                             |  |
| Mission symbol (explain what it represents)                               |  |
| Sensor array to record information  |  |
| Storage room  |  |
| Space for at least two figures  |  |

## Planetary Landing Shuttle Retrieval

|   |  |
|---|--|
| Can you explain what materials you used?                          |  |
| How does your retrieval system work?                              |  |
| How many tries did it take to successfully retrieve your shuttle? |  |
| Can you answer questions you are asked?                           |  |

## Planetary Rover challenge

|   |  |
|---|--|
| Can your rover hold:<br>at least two people<br>Cargo<br>Required equipment (at least 4 tools) |  |
| Did the rover successfully drive when pushed?   |  |
| Did everything stay in the rover when driving downhill and crashing at the bottom?            |  |
| Did everything stay in the rover when pushed into the wall?                                   |  |

## How to cross the oobleck ocean

|  |
|--|
| What properties does the oobleck ocean have? |
| What methods did you use to cross the ocean? |

How did you successfully cross the ocean?